

## Bad Mister's Motif ES Phrase Factory Tips and Tricks... (SONAR)

### PHRASE FACTORY: Recording Arpeggio MIDI data to external sequencers

Phrase Factory is our pet name for the musical content that is available within the Motif ES. Specifically, this includes the more than 1700 musical arpeggios (with tons of guitars and bass data played by actual players), nearly 700 drum grooves (played by real drummers) and the endless variations possible with the Real Time Loop Remix function. This short article will be on using the arpeggios and recording the MIDI data from them to an external sequencer. Five different arpeggio patterns can be associated with your Song or Pattern Mix. This article assumes you are using a Song or Pattern MIXING setup to house your multi-timbral/multi-MIDI channel setup – as recommended when working with an external sequencer. And although our example uses a **Motif ES** connected via mLAN-MIDI to a computer running **SONAR** – the setup is the same if you are using any computer sequencer even if you are using USB-MIDI (While the port number assignments for your system may be completely different, simply make the proper MIDI assignments when prompted).

In our example, PART 04 of the MIXING setup is an electric guitar. I have already laid down several tracks in Sonar (drums, bass and a clavinet) – I decide as my fourth Part, I want to use the funk guitar arpeggios associated with **VOICE User 1: 012 (A12) Funk Star**

- Place the Voice in Part 04 of the MIXING setup
- Press [MIXING]
- Press [JOB]
- Press [F3] COPY
- Setup to Copy the Arpeggios associated with the Voice currently in PART 04 to the current MIX



- Press [ENTER], [YES] to execute

This will copy the five arpeggios associated with this Voice to the current MIXING setup. I will be able to, in real-time, switch between the arpeggio patterns as I record the output to Sonar. Pressing the Sub-function [SF1]-[SF5] buttons while Sonar is recording will allow me to dynamically move between the 5 arpeggio patterns. This kind of “live” performance will add spontaneity and life to your recording. The advantage of using the Phrase Factory (arpeggios) is that much like handing a musical chord chart to a guitar player, the Motif ES’s arpeggios are interpretations that add real guitar articulations and gestures to our recording. Each Arpeggio comes to life when you feed it chord progressions. How you voice a chord and when you let go of particular notes can make a huge difference in how the pattern “plays” – with guitar arpeggios it is important to use chord inversions to vary the patterns. When doing funk guitar use principally 4 and 3 note chords to outline the chords you need for your composition. You may even want to reduce the number of held notes to a single note at times.

### Setting up to record arpeggio MIDI data Sonar/Motif ES

This short tutorial is in two sections:

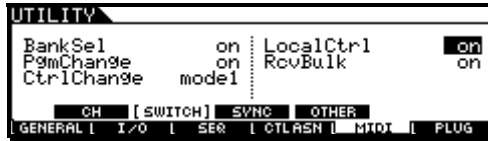
- 1) **Record** the arpeggio data from the Motif ES to Sonar as MIDI data.
- 2) **Playback** the MIDI data to the Motif ES from Sonar

### RECORD: Motif ES → Sonar

*Background:* On the Motif ES Local Control must be set to ON. In a typical computer MIDI recording scenario you probably work with Local Control OFF – however, in order to properly record your arpeggio data to Sonar we will temporarily turn the Local Control ON. This will allow the key presses to go directly to the arpeggiator triggering the Motif ES tone generator before we route them out via MIDI to the software. We will also want to prevent our key presses from being recorded into Sonar – we **only** want to record the output of the arpeggiator. We will want to synchronize the clock of the Motif ES to the Sonar Master clock. Here's how to set things up:

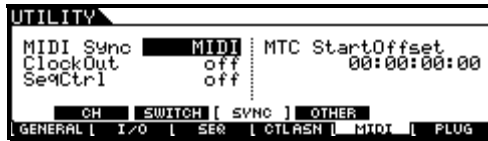
Set the Motif ES to Local Control ON

- Press [UTILITY]
- Press [F5] MIDI
- Press [SF2] SWITCH
- Set LocalCtrl = **ON**



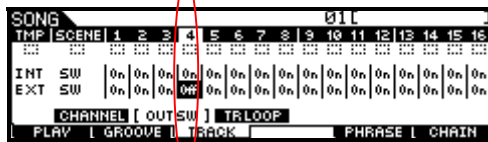
Set the Motif ES to external MIDI Sync and shut Sequencer transport Control OFF

- Press [SF3] SYNC
- Set MIDI SYNC = **MIDI**
- Set Clock Out = **OFF**
- Set the SEQ CTRL = **OFF**



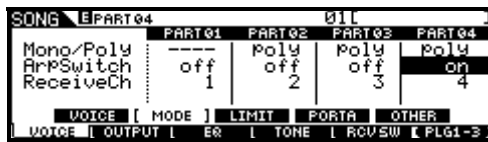
Set the Motif ES Sequencer so that it does not transmit the key-presses out via MIDI – you do this by turning the External transmit Switch to **OFF**. From the main [SONG] or [PATTERN] mode screen

- Press [F3] TRACK
- Press [SF2] OUT SW
- Set the **EXT SW** = **OFF** for the TRACK/PART you are using (screen shot below Part 4 is being used)



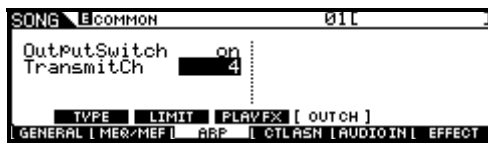
Set PART 04 as the arpeggio Part by turning its ARP PART Switch = ON

- Press [MIXING]
- Press [EDIT]
- Press Track Select [4] to view Part 04 parameters
- Press [F1] VOICE
- Press [SF2] MODE
- Set the ARP Part Switch = **ON**



Set the Arpeggio to transmit out via MIDI and set the MIDI channel you wish to use. While still in [MIXING] > [EDIT]...

- Press [COMMON]
- Press [F3] ARP
- Press [SF4] OUT CH
- Set the OUTPUT SWITCH = **ON** and select a specific MIDI channel to transmit the arpeggio (for our example, Transmit Channel **4** is being used as the arpeggio transmit channel)

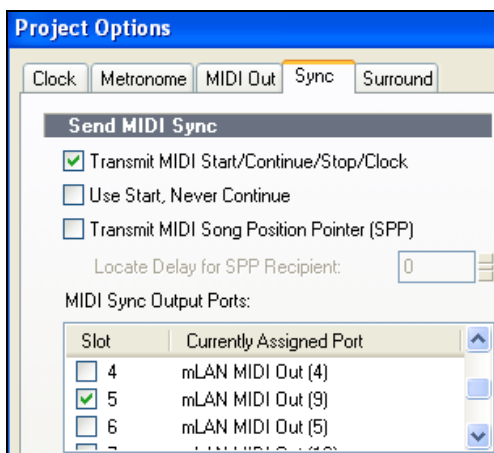


*Background:* In Sonar set a track to receive data but **not** to echo it back. Set up a MIDI track with the INPUT set to receive data from the Motif ES in a normal fashion. Do not set the track to transmit back to the Motif ES – leave the Input Echo function: OFF. You can set the output once you have recorded the arpeggio and are ready to

playback. You will also need to set Sonar to transmit Master clock. Although Sonar is typically running on its own clock, it is not set to transmit that clock until you activate it. Here's how...

Set Sonar to transmit MIDI clock to the Motif ES

- Click on OPTIONS on the main toolbar and select PROJECT... then select the SYNC Tab
- Select the "Transmit Start/Continue/Stop/Clock option
- Set the MIDI SYNC OUTPUT PORT so that it feeds the Motif ES (in the screen shot below "mLAN MIDI Out (9)" is the Port that is feeding my Motif ES and it is selected as the MIDI Sync Output Port). In your setup this may be via USB-MIDI port, or mLAN-MIDI according to your MIDI interface – please set appropriately for your particular system.
- Click OK



Add a MIDI track to record the arpeggio MIDI data. On the main Sonar screen...

- Click on INSERT
- Select MIDI Track

Set the Track's Inspector to Receive data from the Motif ES but **not** to echo it back

- Set the **In** to the MIDI Port that the Motif ES is set to send on (Below "mLAN MIDI In (9)" on Ch. 4)
- Set the **Out** as necessary. In my example "mLAN MIDI Out (9)" goes to my Motif ES.
- Don't set the Input Echo Function, leave it OFF – we do not want to send the data back to the Motif ES, yet. Notice I have not even set a playback Channel yet – it is still set to "NONE"



Input Echo: Off

### **PLAYBACK: Sonar → Motif ES**

*Background:* Once the data is recorded to Sonar you can setup to playback the data. There are several things you must do prior to playback. First, you need to turn the front panel arpeggio switch **OFF** on the Motif ES; after all, you have now transferred the data to actual events. Then you need to set the track of Sonar to communicate again with the tone generator of the Motif ES. Next, determine if you need to do any more arpeggio recording, if not, set your Local Control back to OFF and continue to work as normal.

On the Motif ES

- Press the front panel [ARP ON/OFF] button to turn the LED **OFF**, thus shutting off the Arpeggio

In Sonar

- In the Inspector of your MIDI track, set the MIDI **Channel Out** to feed the data you recorded to the Port that is connected to the Motif ES. ("Motif ES All" in our example below)



Recording arpeggio data from the Motif ES to your external sequencer will allow you to edit it further and take advantage of the tools found in your software. Remember you can cut and paste data to place it where you need it. The same arpeggio pattern can be varied in an almost infinite number of ways – learn to use chord inversions, rests and timing to your advantage. Enjoy.