

# MOTIF XS

## QUICK SETUP GUIDE: USB-MIDI Cubase AI4 / Motif XS Editor / Windows

### Install

\_ Install "Cubase AI4" on your computer. Update to the latest version at [www.steinberg.net](http://www.steinberg.net)

### Download and Install

- \_ The Motif XS Operating System Updater v1.10 (or later)
- \_ "Studio Manager" v2.3.0 (or later) should be installed on your computer.
- \_ The Motif XS Editor v1.1.0 (or later) should be installed on your computer
- \_ The "Extensions for Steinberg" v1.4.0 (or later)

[http://www.yamahasynth.com/download/motif\\_xs.html](http://www.yamahasynth.com/download/motif_xs.html)

Download and install the latest Yamaha USB-MIDI driver for your operating system from the following site:

[http://www.yamahasynth.com/download/midi\\_driver.html](http://www.yamahasynth.com/download/midi_driver.html)

At the time of this article for Window XP that would be version 2.2.2 and for Windows Vist/XPx64 would be version 3.0.2

### Connect via USB

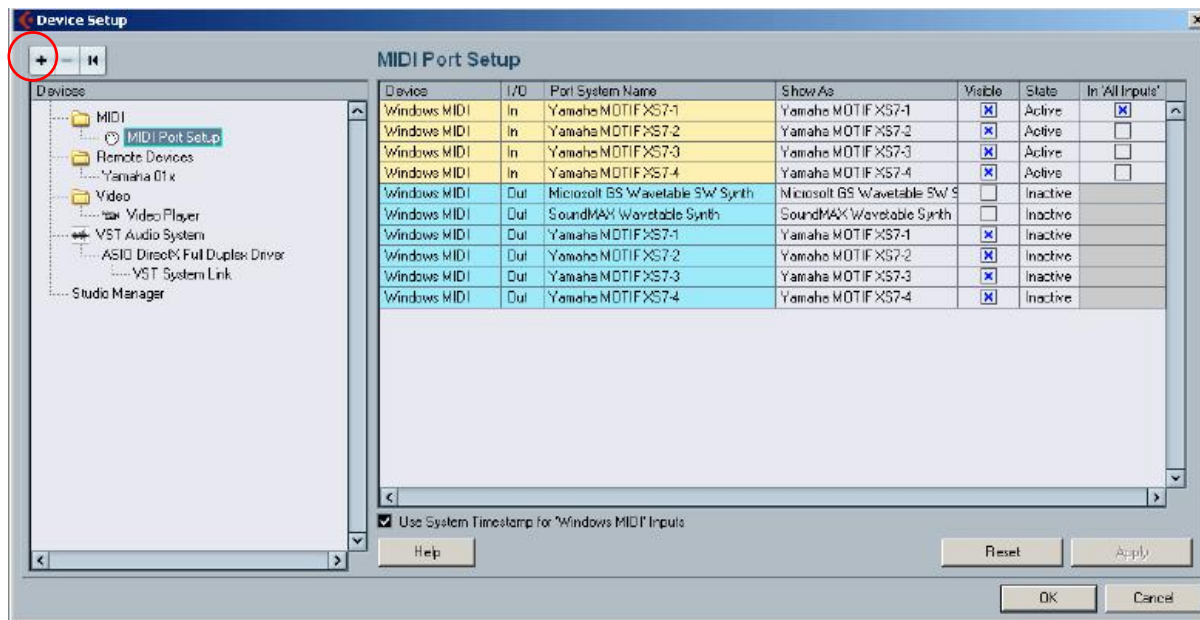
\_ Connect the Motif XS to your computer via USB.

\_ Set the Motif XS to MIDI IN/OUT = USB

- Press [UTILITY]
- Press [F5] CONTROL
- Press [SF2] MIDI
- Set MIDI IN/OUT = USB
- Press [STORE] to write this to your Flash ROM

### Launch Cubase AI 4

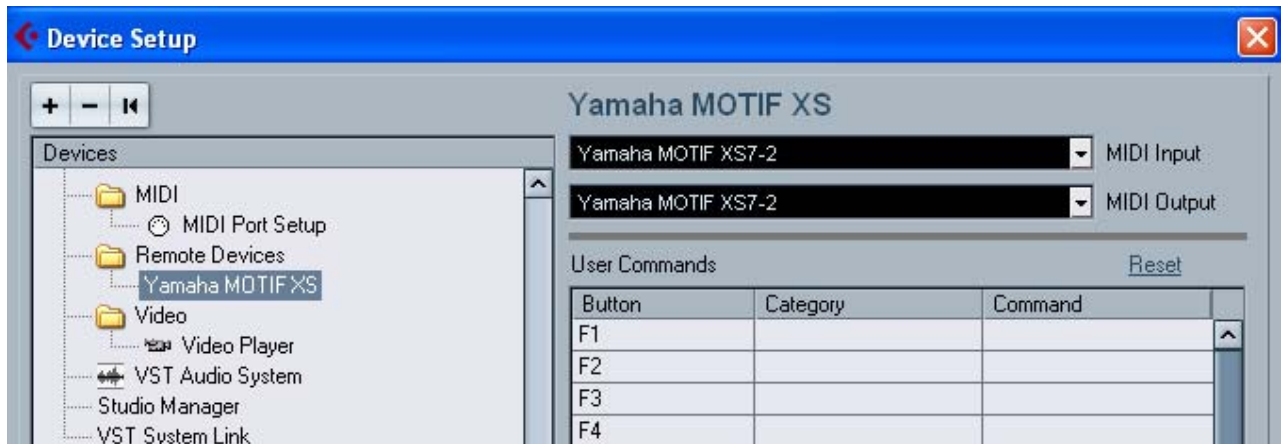
- Click DEVICES
- Select DEVICE SETUP
- Under the "MIDI" folder highlight "MIDI PORT SETUP"
- You should see your Motif XS(x): Example below uses a Motif XS7
- Select only Motif XS(x)-1 as the "In 'All Inputs'" (where 'x' is your Motif XS model 6, 7 or 8)



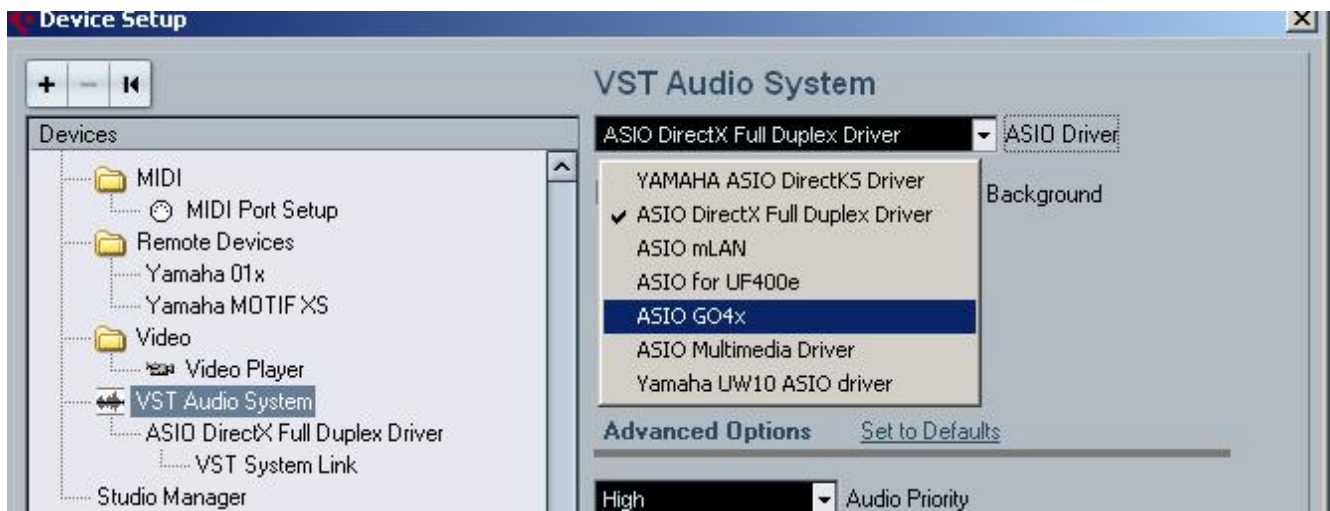
\_Under the "Remote Devices" folder highlight "Yamaha Motif XS"

If it does not appear click on the big "+" symbol in the upper left (circled in red) and ADD the "Yamaha Motif XS" device.

\_Set it to Port 2 (Motif XS(x)-2) for both MIDI IN and MIDI OUT



If you are using an audio interface connect that now under the "VST Audio System" (as you can see in this example I am switching drivers to select the "Yamaha GO46" as my audio interface). Your audio interface maybe different or you may not yet have one at all... use the driver that is appropriate for your interface. If you are only recording MIDI you do not need an audio interface (in which case you can skip this step).



- Click APPLY
- Click OK



#### Launch the STUDIO MANAGER

- ON the Cubase Toolbar click on DEVICES
- Select STUDIO MANAGER (shown at left). This will launch the Studio Manager host application within Cubase.

- Go to FILE > SETUP on the Studio Manager toolbar.

You want to "ADD" the "MOTIF XS" editor to your Workspace. There will be a list of Editors on the left side of the dialog box; {ADD} in the middle and your workspace on the right side of the dialog box.

- Click APPLY
- Click OK

This will place the Motif XS icon in your Studio Manager Workspace

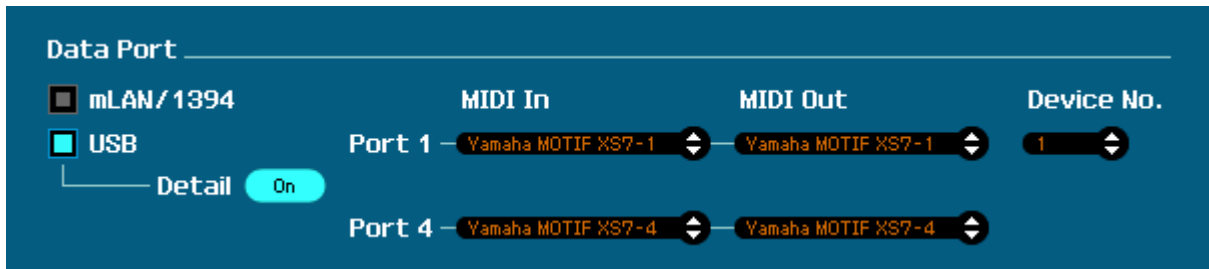
Double click the Motif XS icon to launch the Motif XS Editor

#### Setup the Motif XS Editor

- Click on FILE > SETUP on the Motif XS Editor toolbar
- Here you want to setup the communication between the Motif XS and the Editor.

- Select USB as the DATA PORT
- Set the DETAIL = ON

Make settings for Port 1 and Port 4. The USB connection requires a two-way, two port communication.



**Port 1:**

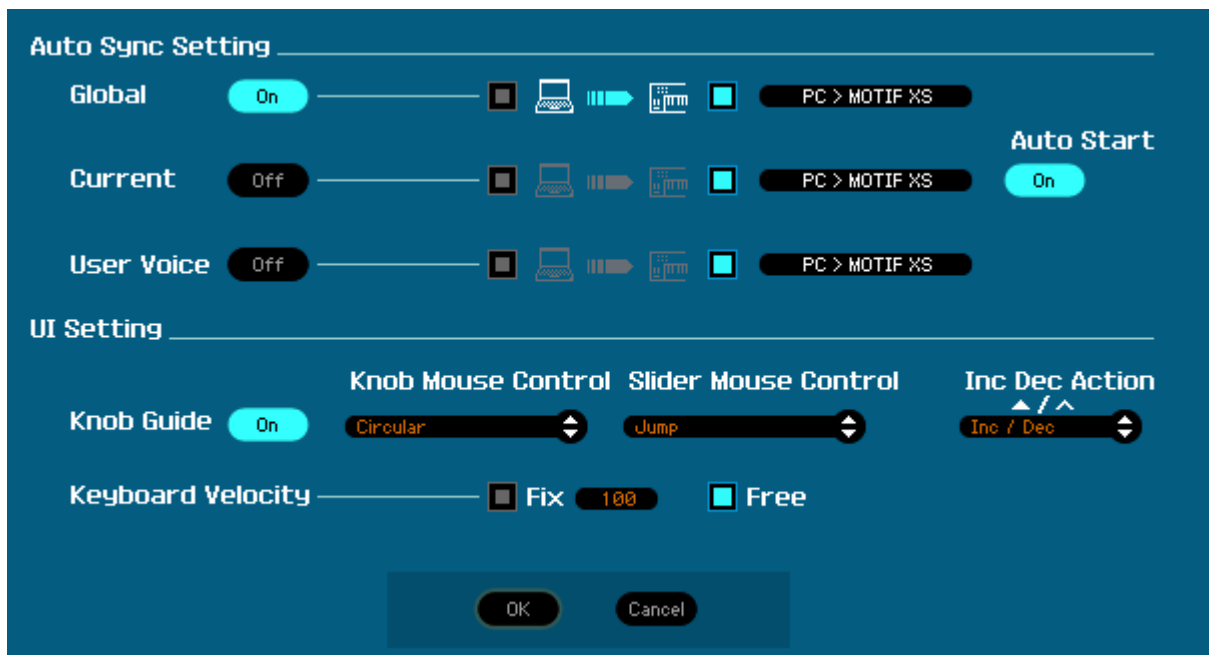
Yamaha Motif XS7-1 for both MIDI IN and MIDI OUT

**Port 4:**

Yamaha Motif XS7-4 for both MIDI In and MIDI OUT

Next you make a decision about the direction of communication. There are two things to consider:

- 1) When you open a New Project in Cubase, how do you want the Editor to behave?
- 2) When you open a previously saved Project, how do you want the Editor to behave?



Typically, when you create a New Project you will want the Editor to clear a new MIX for you. Therefore you will want to have data sent FROM the Editor TO the Motif XS. When you are restoring a previously saved Cubase Project you will want the Editor to send your saved data back to the Motif XS. Therefore you will want to have data sent FROM the Editor TO the Motif XS.

As you can see I have the **Auto Sync Setting** set to **GLOBAL = PC > Motif XS**

You may want to set up so the **CURRENT** is also set to **ON PC > Motif XS** to insure that the Total Recall will send the Current MIX **from** the computer **to** the Motif XS when you open a Cubase Project. Restoring your Mix to the Motif XS. It will do the same thing when you create a New Project. Cool!

If you have the **VOICE** option set to **OFF**, it will not reload **USER** Voice data every time. You do not often need to reload all the User Voices (but you can set this as your prefer). If set to **ON**, then the Editor can restore all your **USER1**, **USER2**, **USER3** and **USER** Drum Kit Voices to your Motif XS each time. It is your choice. We recommend you use the **BULK** Data Sync option for this... explained later in the article.

**Auto Start** is ON

Set the **USER INTERFACE SETTING** as you prefer. The Keyboard Velocity function when set to "FREE" will change how loud the note plays by where on the keyboard icon **KEY** you click. This is pretty cool...

- Click OK



On the main Motif XS Editor screen you want to make sure that the Editor is ONLINE. A bright blue dot appears next to ONLINE when you are communicating.

In the left upper corner you will see the SONG mode, PATTERN mode and the "ONLINE" button. Communication is bi-directional and simultaneous so selecting the mode here will change your hardware and vice versa.

**USING the ONLINE/OFFLINE function**

The ONLINE option has 3 status conditions. It will read either:

- \*ONLINE w/blue dot – This means you are communicating and all is well
- \*OFFLINE w/blue dot – you are temporarily offline but all is well
- OFFLINE – you have trouble. Please check your connections and verify that your Motif XS is set to MIDI IN/OUT = USB
  - Press [UTILITY]
  - Press [F5] CONTROL
  - Press [SF2] MIDI

The OFFLINE w/blue dot is important because you will at some point need to make changes on the hardware and not have the software follow you. This can occur when you are looking for a SONG or PATTERN already in the Motif XS – the Editor will attempt to synchronize each time you scroll through a song. Therefore it is useful to click this option when you want to temporarily break communication. You can click ON and OFFLINE as necessary.

If you go to VOICE mode or to PERFORMANCE mode on the Motif XS hardware front panel, the Motif XS Editor will go temporarily \*OFFLINE w/blue dot.

On the Toolbar of the Motif XS Editor you will see the **BULK** option. This is what you use to request a bulk to or from the Motif XS. You can select the Current MIX, and any of the USER Banks or ALL of the USER Banks. Do not change your preference in the FILE > SETUP > AUTO SYNC SETTING – when you need to send or receive data from the Motif XS use this BULK option.

**BULK > DATA SYNC**



Shown at left is the Bulk Data Sync screen. Here you can either TRANSMIT data from the Editor (computer) to the Motif XS or RECEIVE data from the Motif XS and bring it to the Editor. Notice you have the option of selecting CURRENT (the current Mixing setup), Global settings, your Favorites list, and/or any of the Normal USER or Drum USER Voice banks. This is the most convenient way to capture or send data to and from the Editor.

For example, when you have been working in the Motif XS when you decide to continue work with your computer, you do not want the Editor to Transmit a new initialized MIX – which is what would happen if you used the AUTO SYNC SETUP where you may have COMPUTER > XS as

the default. This Data Sync function can be used prior to bringing the EDITOR fully ONLINE.

You would simply click on BULK > select DATA SYNC and set as shown above. The Editor will now bring your Motif XS MIX and all the settings you have been working on into the Editor. Now when you bring the Editor ONLINE the MIX will be synchronized.

**Setup a NEW PROJECT in Cubase: Making your own Template (highly recommended).**

- In Cubase AI4 click on the FILE option
- Select "NEW PROJECT"
- Select "EMPTY"

You can use any of the pre-made Templates or you can create your own. Ultimately, you will want to create your own once you develop a preference of how you like to work. Cubase will ask you to select a directory for your Project. You can "create" a folder or simply target one you have made previously.

Next you will create a track layout. This will be your own personal preference. For our example we will create a Track setup with 8 MIDI Tracks (you can set as many as you require). Remember you can easily add tracks or remove tracks in Cubase by simply right clicking and using the ADD TRACK or REMOVE TRACK option.

- Right click and select "ADD TRACK" > MIDI
- Make the Track Count 8
- Click OK

Each of the eight tracks will be set to "All MIDI Input" and as we know this is the Motif XS port 1. Each of the eight tracks will be routed out to the Yamaha Motif XS, and each will be on a successively higher MIDI channel. Verify this.

- Next click on FILE > SAVE AS TEMPLATE...
- Name the template something descriptive.

I named mine "Motif XS USB 8 MIDI". Here's why... It reminds me that this template is for when I'm working with the Motif XS (in my studio I need this information). I include USB in the description because this template will configure my connections via USB; I have a separate template for when I am working with the firewire/mLAN connection. The "8 MIDI" reminds me how many tracks are in this template and what type of tracks.

### **Try out your TEMPLATE**

- Click WINDOW and select "Close All"
- Go to FILE > New Project...
- Click on your new Template
- Select a directory for this project
- Click OK to launch your Template

It will recall your USB connections, your REMOTE Settings, your audio interface settings; it will launch Studio Manager, recall the hardware configuration, recall the MIDI connections, and recall the Current Mix and Voices if you included them. It will then ask you if want to restore this to your hardware. Why this extra step? Because at some point you may actually start a project in the Motif XS – say you have a quick idea and want to get it down fast. Later you say I'd like to continue my work in Cubase rather than having the Editor automatically blow away your hardware settings, you get this screen that lets you verify that you want to go FROM or TO the Hardware. Very useful... if you have done a setup in the Motif XS and you want to have the Editor capture it: simply select 'FROM HARDWARE' option. If you want to send your basic start up template select the 'TO HARDWARE' option.

You can customize these instructions to your own preferences. Perhaps you always start with a particular Drum Kit, Bass sound and Keyboard sound; you can make your TEMPLATE that includes the Motif XS Editor with the Voices you like already programmed.

### **Advantage and Conclusion**

The Studio Connection: Recall protocol allows you to store and recall your external hardware settings in your Cubase Project File. Studio Manager will memorize what hardware you were using on a project, it will store not only the Voice list but also the entire mix. That is, *every* parameter you use, and *every* Voice in your Motif XS, per project.

Cubase AI 4  
Cubase Essential 4  
Cubase Studio 4  
Cubase 4